

209 Tidwell Drive Alpharetta, Georgia 30004

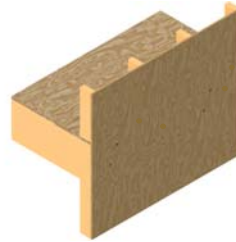
www.hdgep.com

Office 770-777-7007 ~ ext. 234



Structural Deck Support System Installation Guide (A) for Queen & Corner Brackets

*Starting with General
Wall Assembly*



Features HDG Inc. Brackets:

- H1-GQ: 4" Queen
- H2-GCL: Corner Left w/Gusset Plate
- *Also applies to H1-GK & H2-GCR*

USPTO No. 10,024,046: Bracket Bracing System - Copyright© 2018 HDG, Inc. All Rights Reserved - Terms of Use Listed @ www.hdgep.com

209 Tidwell Drive Alpharetta, Georgia 30004

www.hdgep.com

Office 770-777-7007 ~ ext. 234



Installation Guide (A) for Queen & Corner Brackets

****Check for Additional Guidelines per your Local Deck Design Professional and local codes authority****

**Copyright© 2018 HDG, Inc. - USPTO No. 10,024,046 - All Rights Reserved
Terms of Use Listed @ www.hdgep.com - Contact: info@hdgep.com**

Instructions are not intended as deck plans.

Shown for product illustration purposes only.

Fasteners to meet local code requirements.
HDG ASTM123 Hot Dipped Galvanized or Stainless Steel

USPTO No. 10,024,046: Bracket Bracing System - Copyright© 2018 HDG, Inc. All Rights Reserved - Terms of Use Listed @ www.hdgep.com

209 Tidwell Drive Alpharetta, Georgia 30004

www.hdgep.com

Office 770-777-7007 ~ ext. 234

HDG ENGINEERED PRODUCTS

Installation Guide (A) for Queen & Corner Brackets

****Check for Additional Guidelines per your Local Deck Design Professional and local codes authority****

Features HDG Inc. Brackets:

- **H1-GQ: 4" Queen Deck Ledger Support Bracket**
 - *Quantity: (2) used for installation guide demo.*
- **H2-GCL: Deck Corner Ledger Support Bracket w/Gusset Plate (Left)**
 - *Quantity: (1) used for installation guide*

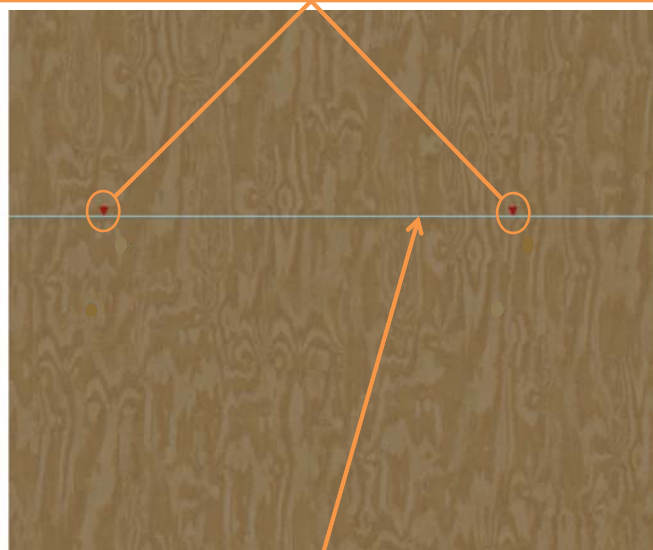


Also applies to (not shown in guide):

- **H1-GK: 5" King Deck Ledger Support Bracket**
 - *Quantity: (2) may be switched out for 4" Queen*
- **H2-GCR: Deck Corner Ledger Support Bracket w/Gusset Plate (Right)**
 - *Quantity: (1) used commonly on complete decks. Mirrors left installation.*
- **Additional Supplies Needed:**
 - *Power Drill, Bolts, Screws, Nuts & Washers*

USPTO No. 10,024,046: Bracket Bracing System - Copyright© 2018 HDG, Inc. All Rights Reserved - Terms of Use Listed @ www.hdgep.com

Following the spacing guidelines per the deck design and joist layout, mark the location of each H1-GQ Queen 4" Deck Ledger Support Bracket.

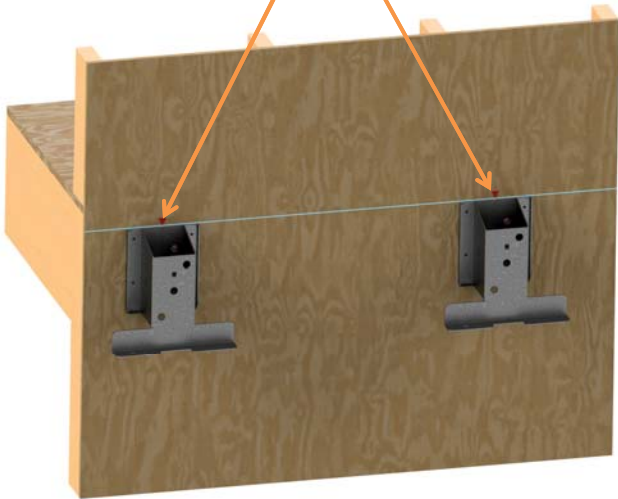


*Not pictured:
House wrap

Mark the level and height with a chalk line for where the top of H1-GQ bracket needs to sit in order to accommodate your deck floor height.

USPTO No. 10,024,046: Bracket Bracing System - Copyright© 2018 HDG, Inc. All Rights Reserved - Terms of Use Listed @ www.hdgep.com

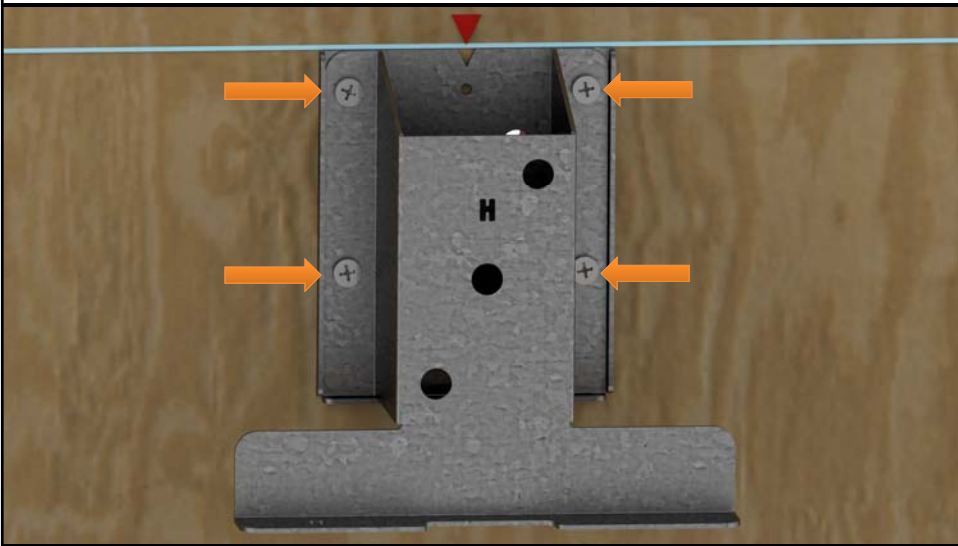
Line the divot in the H1-GQ back plate with the marks made along the chalk line.



USPTO No. 10,024,046: Bracket Bracing System - Copyright © 2018 HDG, Inc. All Rights Reserved - Terms of Use Listed @ www.hdgep.com

HDG
EXCELLENCE PRODUCTS

Fasten the H1-GQ bracket into position with 4 screws or nails.

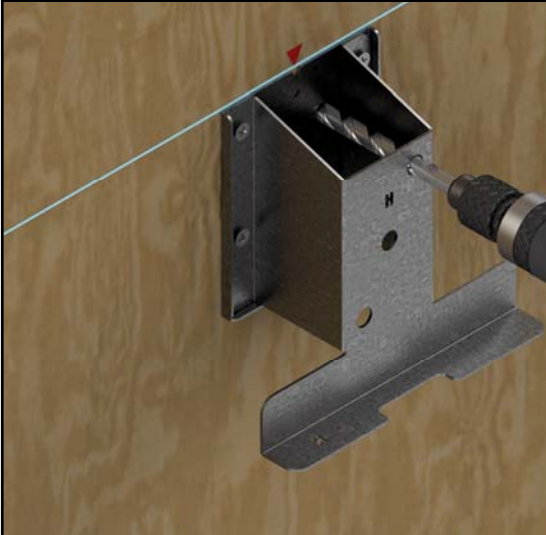


USPTO No. 10,024,046: Bracket Bracing System - Copyright © 2018 HDG, Inc. All Rights Reserved - Terms of Use Listed @ www.hdgep.com

HDG
EXCELLENCE PRODUCTS

HDG
EXCLUSIVE PRODUCTS

Drill from the front of bracket through the rim board.

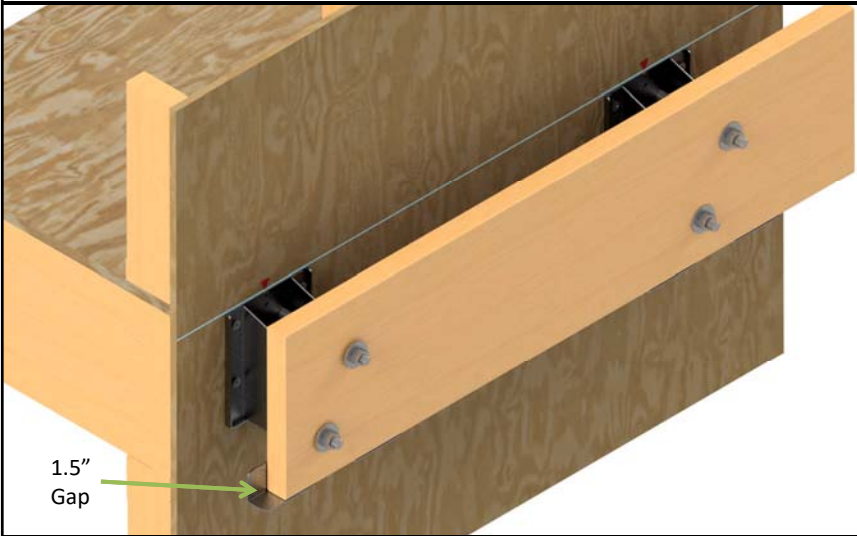


The bracket acts as a guide for straight, accurate holes. Use 5/8" bolts (2 ea. for residential, 3 ea. for commercial) and 12" long drill bit (recommended: Republic Tool Corp. #212 x 21/32").
<https://www.mcmaster.com/#2464a18/=1ea711c>

USPTO No. 10,024,046: Bracket Bracing System - Copyright© 2018 HDG, Inc. All Rights Reserved - Terms of Use Listed @ www.hdgap.com

HDG
EXCLUSIVE PRODUCTS

Bolt ledger board to brackets and wall, keeping the head of the bolt and washer inside the house.



1.5" Gap

Make sure adequate (1.5") space is left on end of ledger board from end of Queen lip for appropriate installation of H2 corner series brackets and outer deck joist(s).

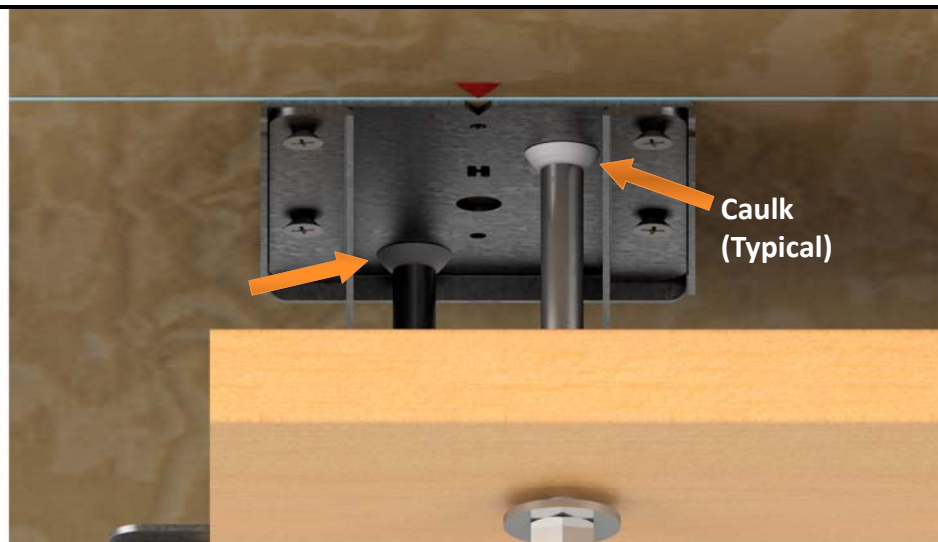
USPTO No. 10,024,046: Bracket Bracing System - Copyright© 2018 HDG, Inc. All Rights Reserved - Terms of Use Listed @ www.hdgap.com

Illustrative image to show bolt heads and washers within interior of house between floor joists.



USPTO No. 10,024,046: Bracket Bracing System - Copyright© 2018 HDG, Inc. All Rights Reserved - Terms of Use Listed @ www.hdgep.com

Caulk the bolt hole within the bracket to provide protection from the elements.



USPTO No. 10,024,046: Bracket Bracing System - Copyright© 2018 HDG, Inc. All Rights Reserved - Terms of Use Listed @ www.hdgep.com



Leaving a 1" air gap from wall, brick up between ledger and wall, around brackets.

USPTO No. 10,024,046: Bracket Bracing System - Copyright© 2018 HDG, Inc. All Rights Reserved - Terms of Use Listed @ www.hdgep.com

Illustrative side view for masonry detail

2x Framing

FLOOR JOIST

1" Air Gap Per Code

BRICK

Vinyl weather barrier rests between brick and over ledger and extends 3" past end of ledger.

Deck Ledger Board

Corner Bracket

Queen Bracket

USPTO No. 10,024,046: Bracket Bracing System - Copyright© 2018 HDG, Inc. All Rights Reserved - Terms of Use Listed @ www.hdgep.com

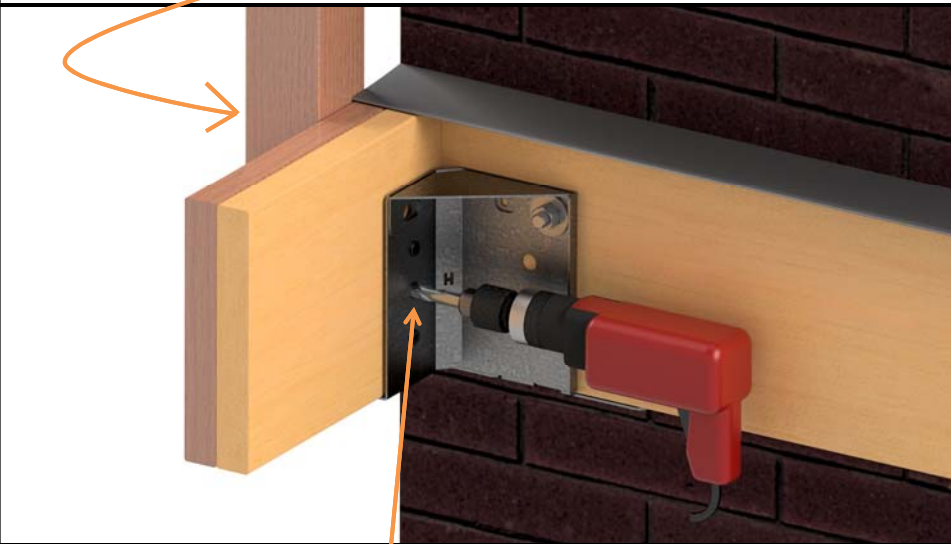
Attach the rim boards by normal fastening methods and temporarily secure the corner bracket with 2 screws or nails as shown.



USPTO No. 10,024,046: Bracket Bracing System - Copyright© 2018 HDG, Inc. All Rights Reserved - Terms of Use Listed @ www.hdgep.com

HDG
ENGINEERED PRODUCTS

Fasten 4x4 handrail post with temporary toenailing or clamps



Drill through rim joist and 4x4 post allowing the corner bracket to act as guide.

USPTO No. 10,024,046: Bracket Bracing System - Copyright© 2018 HDG, Inc. All Rights Reserved - Terms of Use Listed @ www.hdgep.com

HDG
ENGINEERED PRODUCTS

